



ABOUT ELEVATION MIDSTREAM

Elevation Midstream, headquartered in Denver, CO, is a crude oil transmission and gas gathering system of various size pipelines spanning nearly over 200 miles in the Rocky Mountain region of the United States. Elevation Midstream is the owner of Elevation Field Services, Platte River Gathering and DJ South Gathering systems.

Elevation Midstream's employees and its pipeline system and facilities are located throughout Adams, Broomfield, Larimer and Weld Counties, Colorado.

WHAT DOES ELEVATION MIDSTREAM DO IF A LEAK OCCURS?

To prepare for the event of a leak, pipeline companies regularly communicate, plan and train with local emergency responders. Upon the notification of an incident or leak the pipeline company will immediately dispatch trained personnel to assist emergency responders.

Pipeline operators and emergency responders are trained to protect life, property and facilities in the case of an emergency.

Pipeline operators will also take steps to minimize the amount of product that leaks out and to isolate the pipeline emergency.

MAINTAINING SAFETY AND INTEGRITY OF PIPELINES

Elevation Midstream invests significant time and capital maintaining the quality and integrity of their pipeline systems. They also utilize aerial surveillance and/or on-ground observers to identify potential dangers. Company personnel continually monitor the pipeline system and assess changes in pressure and flow. They will immediately respond if there is a possibility of a leak. Automatic shut-off valves are sometimes utilized to isolate a leak.

Hazardous liquid pipeline operators have developed supplemental hazard and assessment programs known as Integrity Management Programs (IMPs). Specific information about Elevation Midstream's program may be found by contacting us directly.

PRODUCTS TRANSPORTED

Product: Crude Oil

Leak Type: Liquid

Vapors: May ignite on surfaces at temperatures above auto- ignition temperature. Flammable vapors may be present even at temperatures below the flash point. This material is a static accumulator. Even with proper grounding and bonding, this material can still accumulate an electrostatic charge. If sufficient charge is allowed to accumulate, electrostatic discharge and ignition of flammable air-vapor mixtures can occur.

Health Hazards: Inhalation or contact with material may irritate or burn skin and eyes. Fire may produce irritating, corrosive and/or toxic gases. Vapors may cause dizziness or suffocation. Runoff from fire control or dilution water may cause pollution.

Product: Natural Gas

Leak Type: Gas

Vapors: Lighter than air and will generally rise and dissipate. May gather in a confined space and travel to a source of ignition.

**EMERGENCY CONTACT:
1-303-396-6068**

PRODUCTS/ DOT GUIDEBOOK ID#/ GUIDE#:

Crude Oil	1267	128
Natural Gas	1971	115

**COLORADO
COUNTIES OF OPERATION:**

Adams	Larimer
Broomfield	Weld

Changes may occur. Contact the operator to discuss their pipeline systems and areas of operation.

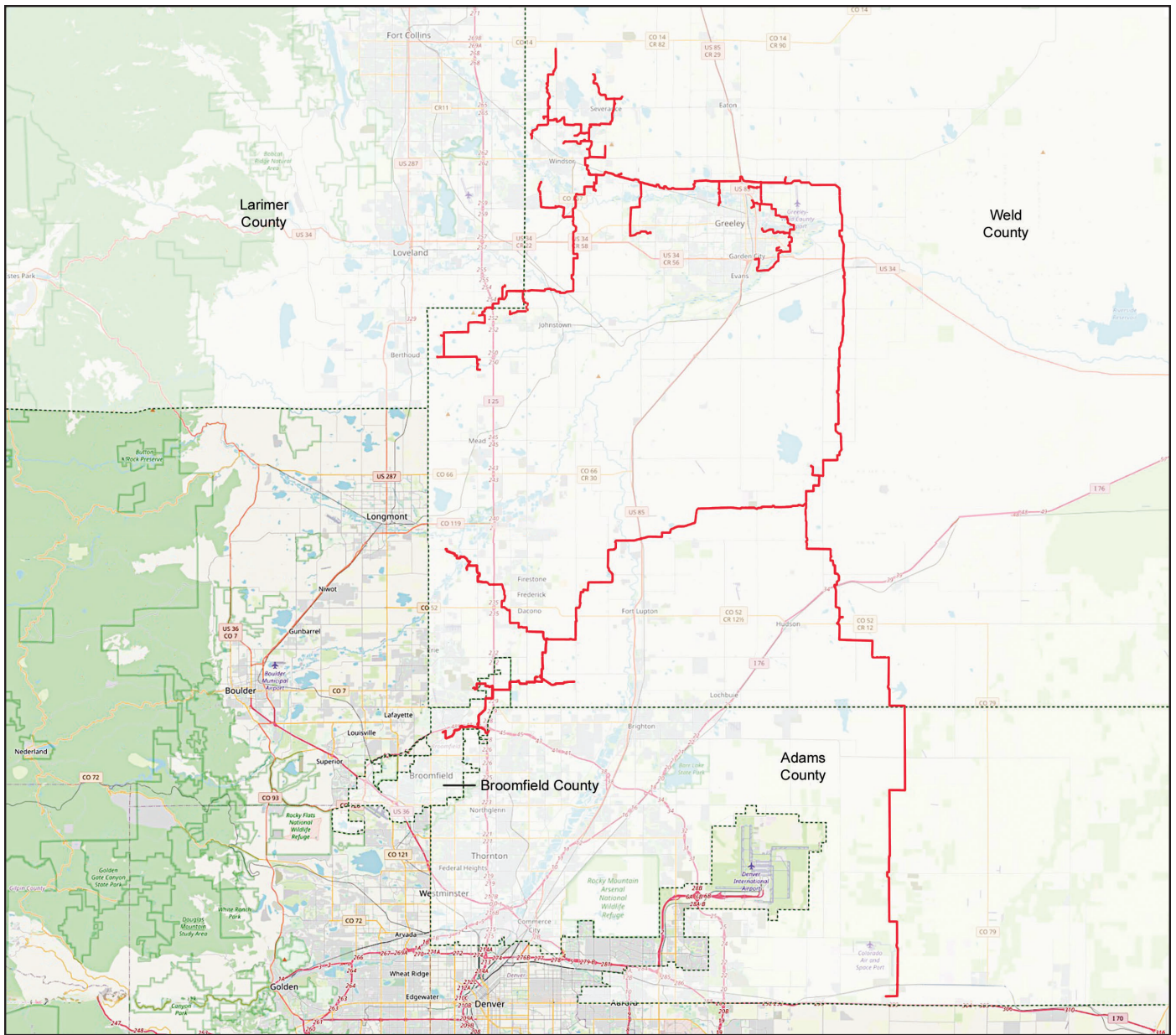
Health Hazards: Will be easily ignited by heat, sparks or flames and will form explosive mixtures with air. Vapors may cause dizziness or asphyxiation without warning and may be toxic if inhaled at high concentrations. Contact with gas or liquefied gas may cause burns, severe injury and/or frostbite.

HOW TO GET ADDITIONAL INFORMATION

For an overview of Elevation Midstream, go to www.elevationmidstream.com or contact us at 303-626-8290.



Elevation Midstream



Base map courtesy of openstreetmap.org